



Toddler Climber

Installation Instructions



Toddler Climber

Installation Instructions

NOTES: Please check for any damage caused by the shipping company and take appropriate steps to file a claim, if needed.

*Please call **Digsafe** and check for any underground utilities before digging anywhere.

Materials needed

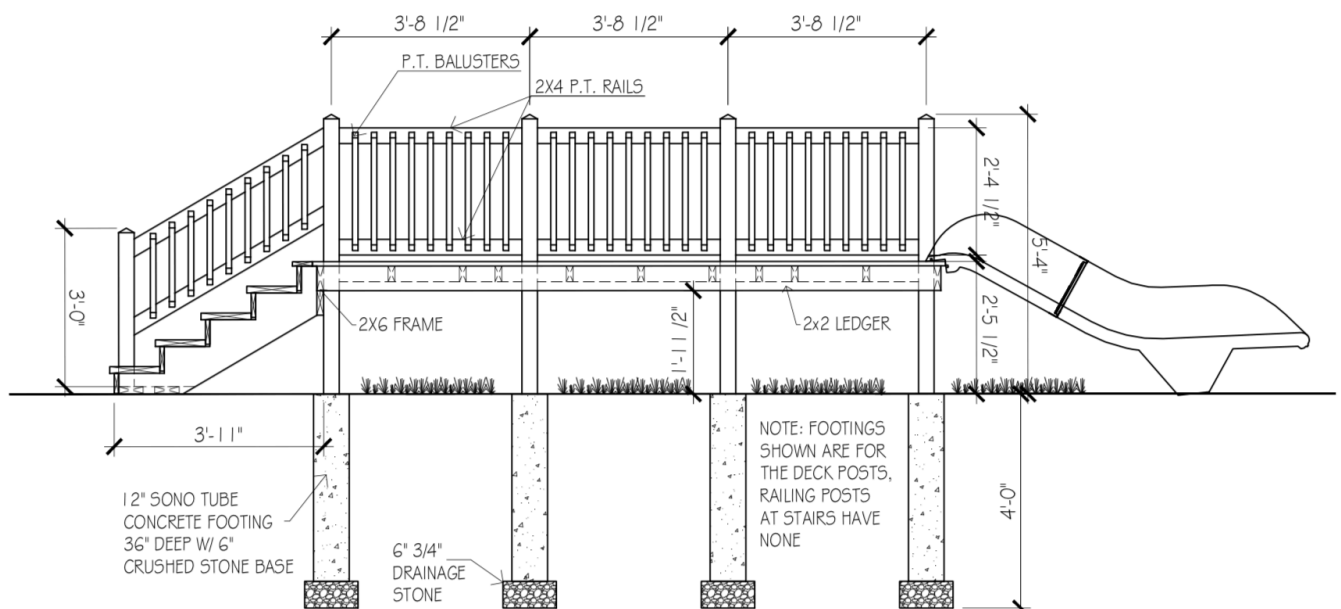
Cordless drill/driver, T25 bit, T30 bit, auger and/or post hole shovel, spade shovel, transfer (flat) shovel, grade rake, garden rake, level, tape measure, hand tamp, 6' ladder, and seventy (70) 50lb bags of fast-setting premixed concrete (not included). Concrete amount required may vary depending on how deep you can get the holes. Concrete amounts can be easily calculated at <http://www.quikrete.com/Calculator/Main.asp>.

Instructions

1. Remove items from pallet or packaging. You should find one (1) 11'-10" deck frame assembly, eight (8) deck frame posts, six (6) deck railing assemblies, one (1) stair assembly, two (2) stair posts, two (2) stair railings, one (1) slide mounting board, one (1) deck/slide railing assembly, some loose stair and deck boards, and provided hardware.
2. First, we'll attach the deck frame to the eight deck frame posts. Mark a line 23-1/2" up from the bottom of each of the eight deck frame posts (deck frame posts are 5'-4" long).

**Note:* It is recommended to attach deck frame to the deck frame posts on flat ground (such as a parking lot), then be carried to desired installation location. All pieces are labeled for easy assembly.

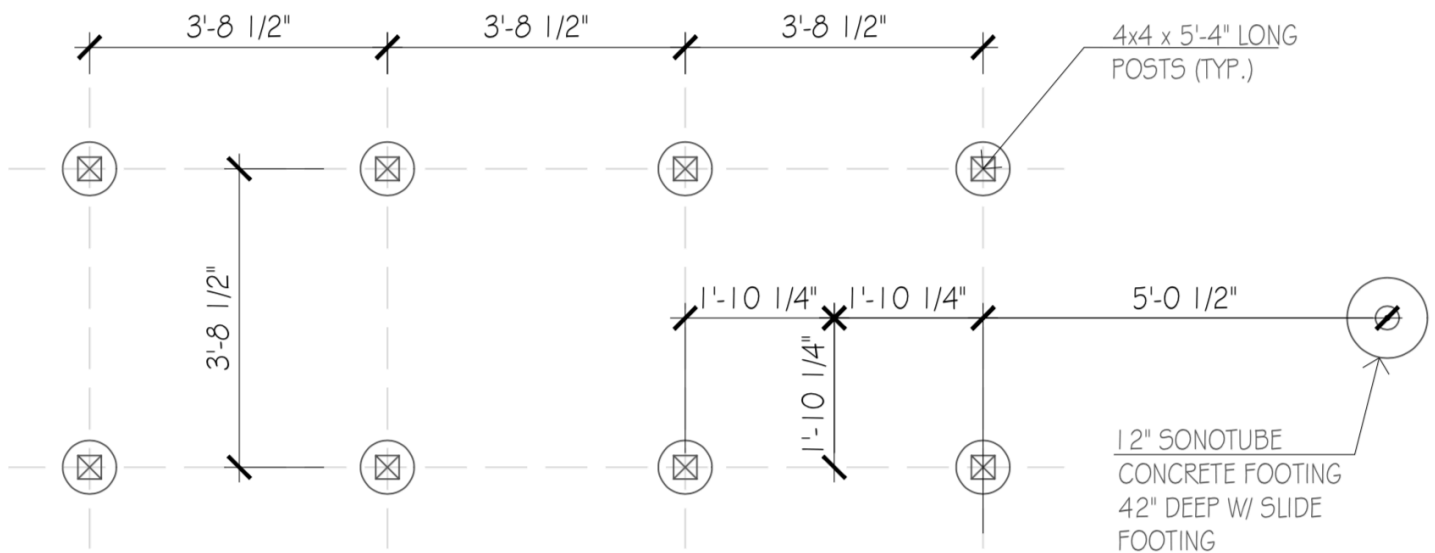
3. With the deck frame assembly laying on flat ground, insert each post into their corresponding notch out in the deck boards. Now slide the deck frame assembly up the posts until the bottom of the 2x6 deck frame is flush with the line we drew in step 2, and fasten the deck frame to the posts through the marked locations.



Toddler Climber

Installation Instructions

4. Now you'll mark and dig the footings. Move toddler climber deck/post assembly to desired location (It is recommended to cross brace the posts roughly 5ft up from the bottom). Position the assembly so the posts are close to the location you want and mark the location of the post bottoms, referencing the foundation plan below.

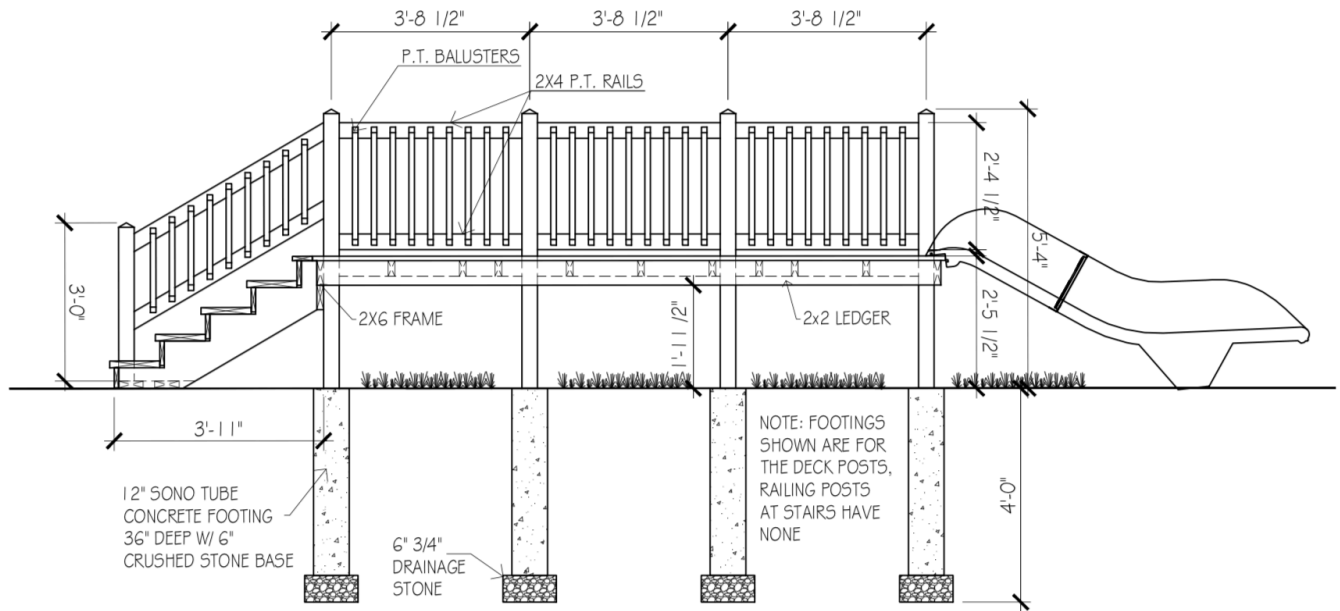


5. Move the deck/post assembly away from marked locations to give you room to dig post holes, using an auger or a post hole shovel/digger.
6. Set the eight post hole diameters and one slide foot hole to 1'-0," and hole depths to approximately 4'-0" (depending on region). The bottom of hole should "flare" out a little to create a bell shape to prevent frost heaving the post where applicable. Check local codes for the frost line in your area.
7. Using the hand tamp, compact any loose material at the bottom of the holes.
8. Fill the bottom 6" of holes with drainage stone (for the deck post holes only, NOT the slide foot. We'll concrete the slide foot later). Insert sonotubes into holes and fill with fast setting concrete mix adding water per instructions on bag. Using a laser level, make sure all footings are at the same height. Let concrete cure for 24 hours.
9. Place toddler climber deck/post assembly onto footings. Using a bubble level, check the level of the toddler climber horizontally by placing the level across the deck horizontally from front to back, and left to right, in three different evenly spaced spots. Make any adjustments needed.
10. Next, plumb the toddler climber posts in both directions by placing the level on two adjacent sides of each post. Plumb one post first, then plumb the second, and so on.
11. Secure the posts to the footings using Simpson Strong-Tie galvanized retrofit post base, or similar. Attach the strong-ties to the posts, then predrill the holes to secure the strong-tie to the footing using a masonry bit, then attach with redhead anchor bolts or similar.

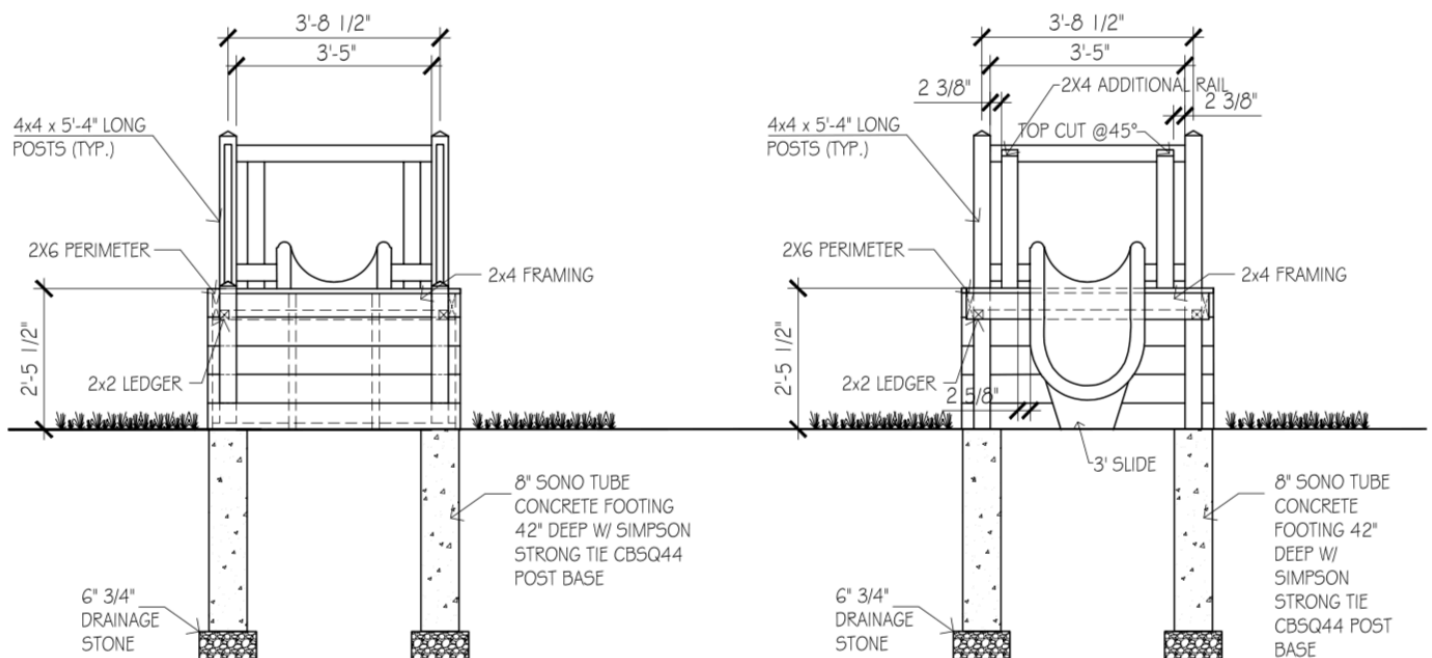
Toddler Climber

Installation Instructions

- Recheck to make sure toddler climber is level and plum, and make any adjustments.



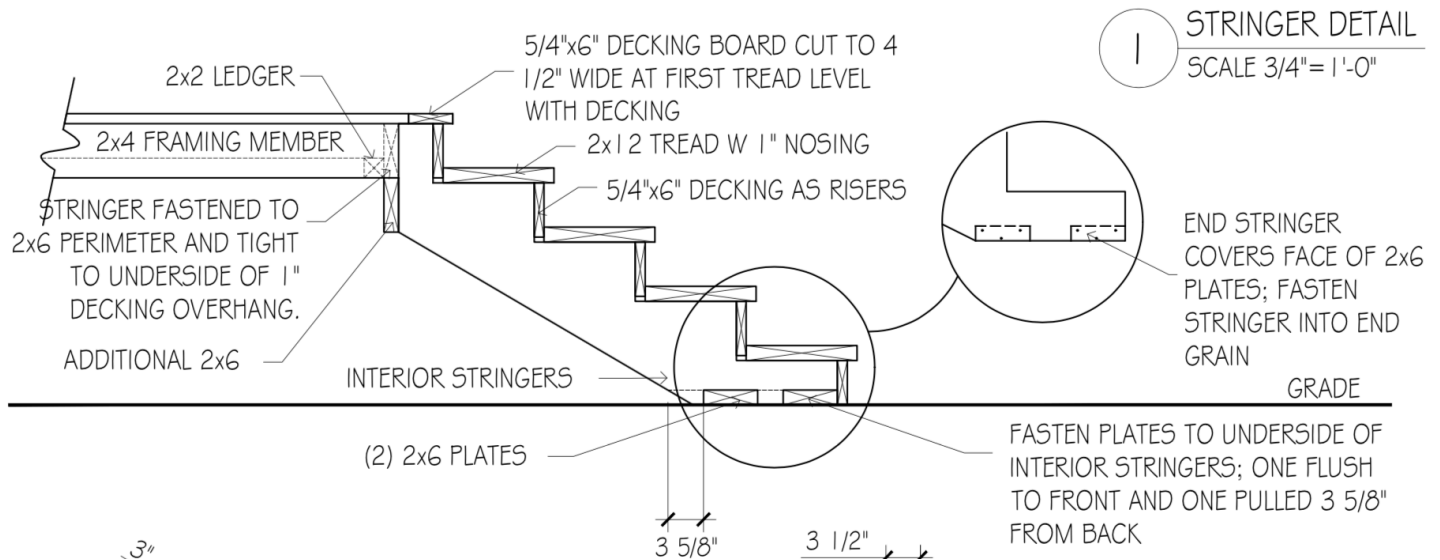
1 SIDE VIEWS
SCALE 3/8" = 1'-0"



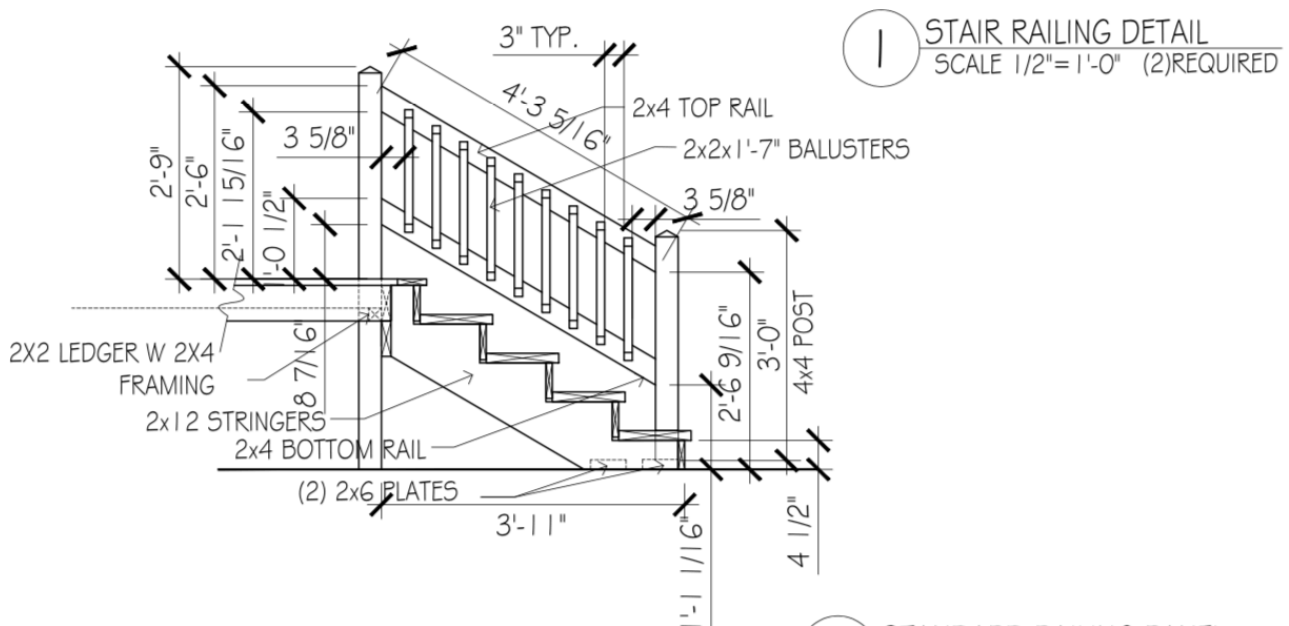
Toddler Climber

Installation Instructions

13. Now we'll attach the stairs. Line the stair stringer assembly up to the deck frame, and fasten by screwing through the inside of the deck frame into the stair assembly ledger mounting board as shown below.



14. Insert the two stair posts into the stair assembly so the posts rest on the 2x6 plates shown below, and fasten posts to the stairs driving screws through the stair stringers and bottom riser.



15. Next we'll attach the railings. Insert the two stair railings between the stair posts and fasten to the posts with 8 screws per railing section. Do this for the six deck railing sections, and the slide sit down bar railing as well. All posts and railings are marked.

Toddler Climber

Installation Instructions

16. Now we're onto the slide. Line the slide mounting board up to the slide entrance as shown below, and drill three holes through the slide using the mounting plate as your guide. Then attach the slide mounting plate to the slide with the three carriage bolts provided. If the slide isn't already assembled, you can assemble it now.



Slide Entrance



Slide Chute (Exit)

17. Flip the slide over to attach the slide foot. Line the foot up with the predrilled holes on the slide chute as shown above, and fasten the foot to the chute (slide exit).
18. Lastly we'll install the slide. Insert the sonotube into the hole we dug for the slide foot in step 6. Lift the slide up and drop the slide foot into the sonotube, then pull the slide entrance up to the deck aligning the three holes in the slide entrance mounting plate to the three holes in the deck frame. Fasten the two together, screwing through the deck frame into the slide entrance mounting board.
19. Check the slide angle using an angle finder (you can download free angle finder apps on your phone) to ensure its at the desired slope (33-35 degrees).
20. Make sure the slide is level from side to side by placing a level across the side rails near the slide chute so the level is perpendicular to the slide, and make any adjustments necessary.
21. Fill the slide foot sonotube with fast setting concrete mix adding water per instructions on bag. Recheck your slope and the level from side to side.
22. Backfill holes and hand tamp good draining soil firmly to 3" below finished grade. Install top soil to finish grade and plant grass to fill in around holes.
23. All wood is treated with kid-friendly preservative, but as is the case with all wood facing the elements, it needs to be cared for, so check it periodically for rough spots, splinters, etc, and sand them out, and treat it with kid-friendly wood preservative (we have it available if you can't find it) once or twice a year to keep the wood from deteriorating.
24. Enjoy your Toddler Climber!